

SICI

The Standing International
Conference of *Inspectorates*
Better Inspection, Better Learning



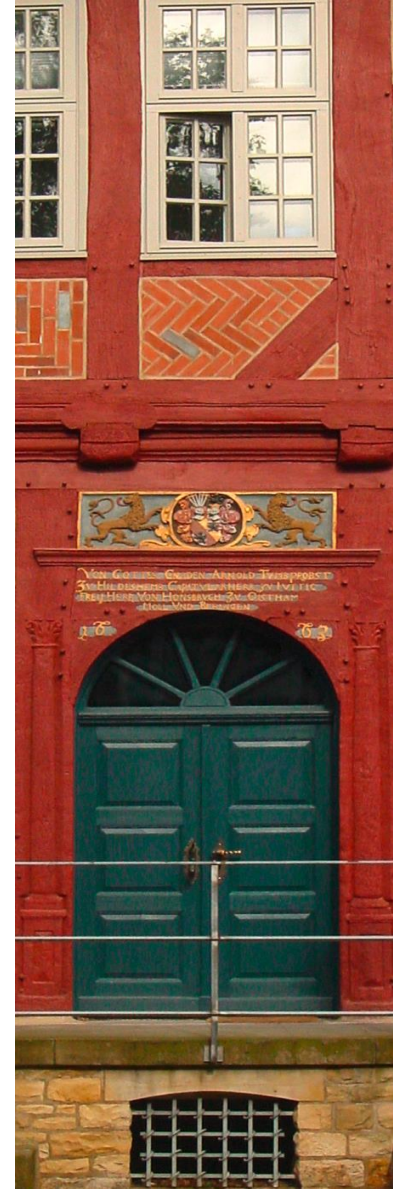
Inspectie van het Onderwijs
Ministerie van Onderwijs, Cultuur en
Wetenschap

NLO
Hildesheim

International SICI Workshop “INTERNAL QUALITY ASSURANCE ON JUDGEMENTS” Utrecht, 5 – 6 March 2020

Procedures in Lower Saxony, Germany

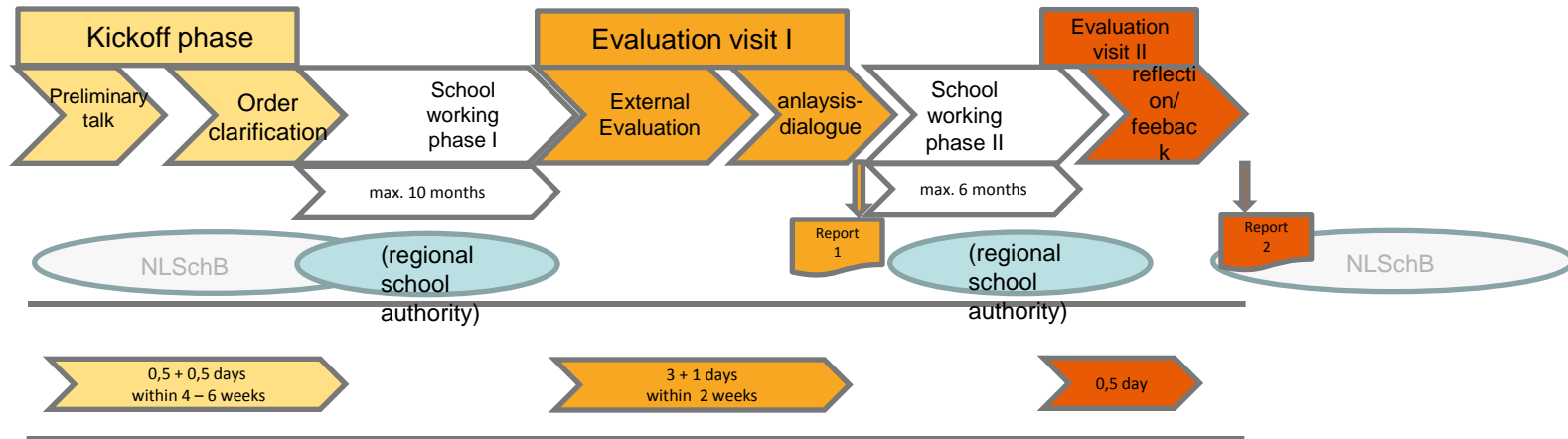
Jürgen Kluth



Overview Workshop

- ▶ What is Focus evaluation?
- ▶ Qualification of (new) inspectors
- ▶ Development and maintenance of instruments
- ▶ Quality assurance
 - » Permanent training of lesson observation
 - » Permanent evaluation
 - » Permanent development/adaption

Procedure of focus evaluation



max. 18 months

Qualification of new inspectors

- ▶ **Five training courses for new inspectors:** theoretical inputs
- ▶ **Hospitations:** preliminary-talk, order clarification, Evaluation visit I, oral and written report I
- ▶ **Qualification:** preliminary-talk, order clarification, Evaluation visit I, oral and written report I
- ▶ **Two employee-supervisor interviews**
- ▶ **Approval of probation**

-
- ▶ All instruments are developed by inspectors in cooperation with scientific department of NLQ, external scientists, teachers and schoolboard
 - ▶ Piloting of instruments in schools – adaption of instruments
 - ▶ Frequent video trainings – classroom observation froms
 - ▶ Analysis of inspectors' judgements → discussion of chosen features → fixation in an action instruction

Questions for Fast Networking

How do we get and use the inspectors' and empirical knowledge for quality assurance?

How do we get and use the schools' knowledge for quality assurance and feedback?

Data Collection and Gathering Information

Inspectors

- ▶ status quo of organizational processes and quality of teaching and learning in individual schools
 - ▶ assessments of process levels, based on the core task model
 - ▶ assessments of quality of teaching and learning based on the lesson observation form
 - ▶ Excel-based and online-based applications
-
- ▶ reference information about other schools
 - ▶ systematic exchange during staff meetings and in inspection teams for the purpose of calibration
-
- ▶ applicability and manageability of defined procedures and methods
 - ▶ systematic feedback on individual components and instruments of the inspection process
 - ▶ inspection visits of executive managers

Quality Assurance in Context with Data Flow

Quality Assurance

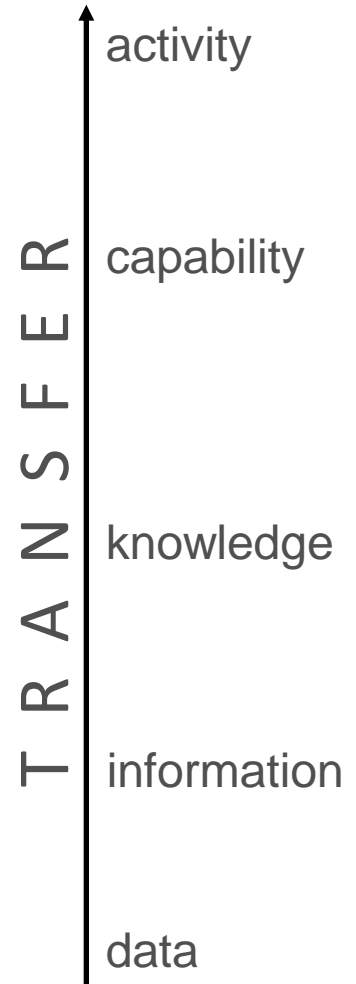
- create and maintain the quality of products and services
- secure defined quality requirement

Knowledge Management

- systematic influence on organisation's knowledge base
- using knowledge for organizational development

Data Flow

- data as part of the knowledge base
- exchange data between tasks



Data Collection and Gathering Information

Schools

- ▶ implementation and evolution of organizational processes
- ▶ efforts to improve quality of teaching and learning

accompanying scientific research

-
- ▶ results of self-evaluation
 - ▶ self assessment instruments

-
- ▶ application and handling of defined procedures and methods
 - ▶ standardized feedback on procedure and realisation of school inspection

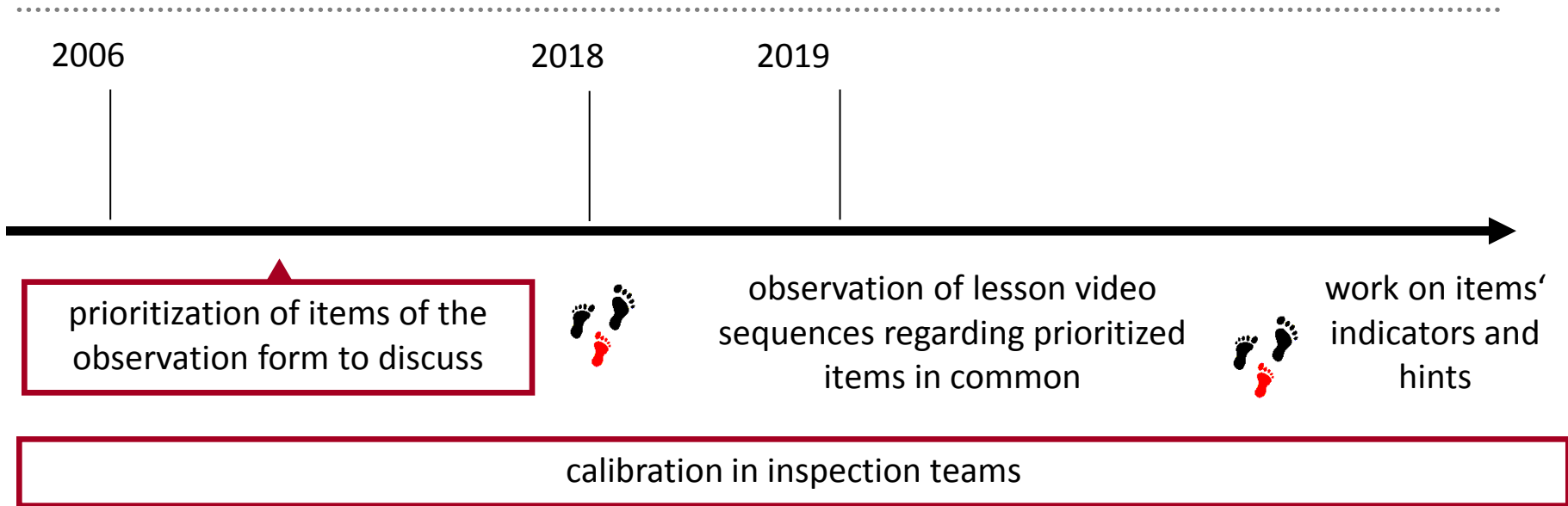
Questions for Fast Networking

Which settings are appropriate to enhance the common understanding of school quality and quality of teaching and learning?

Calibration in Inspection Teams

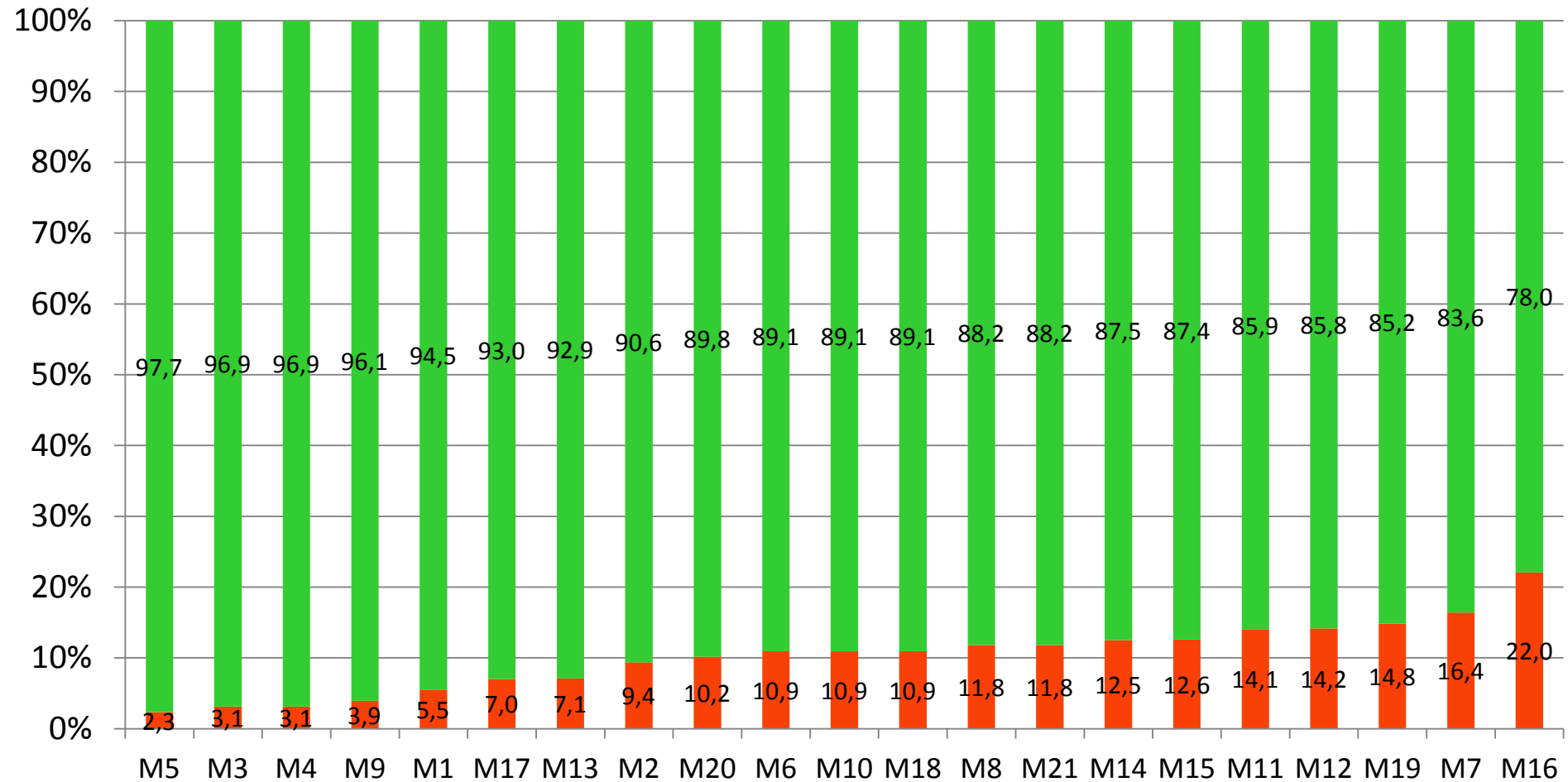
- ▶ one calibration lesson per inspection
- ▶ observation form is filled out by every team member
- ▶ 30 minutes debriefing
- ▶ developing and entering an aligned version of observation form
- ▶ making visible the process of alignment („Calibration-Observation-Form“)
- ▶ „Calibration-Observation-Form“ is sent to NLQ
- ▶ anonymized analysis

Quality Assurance of Lesson Observation



Accordance – Relative Frequency

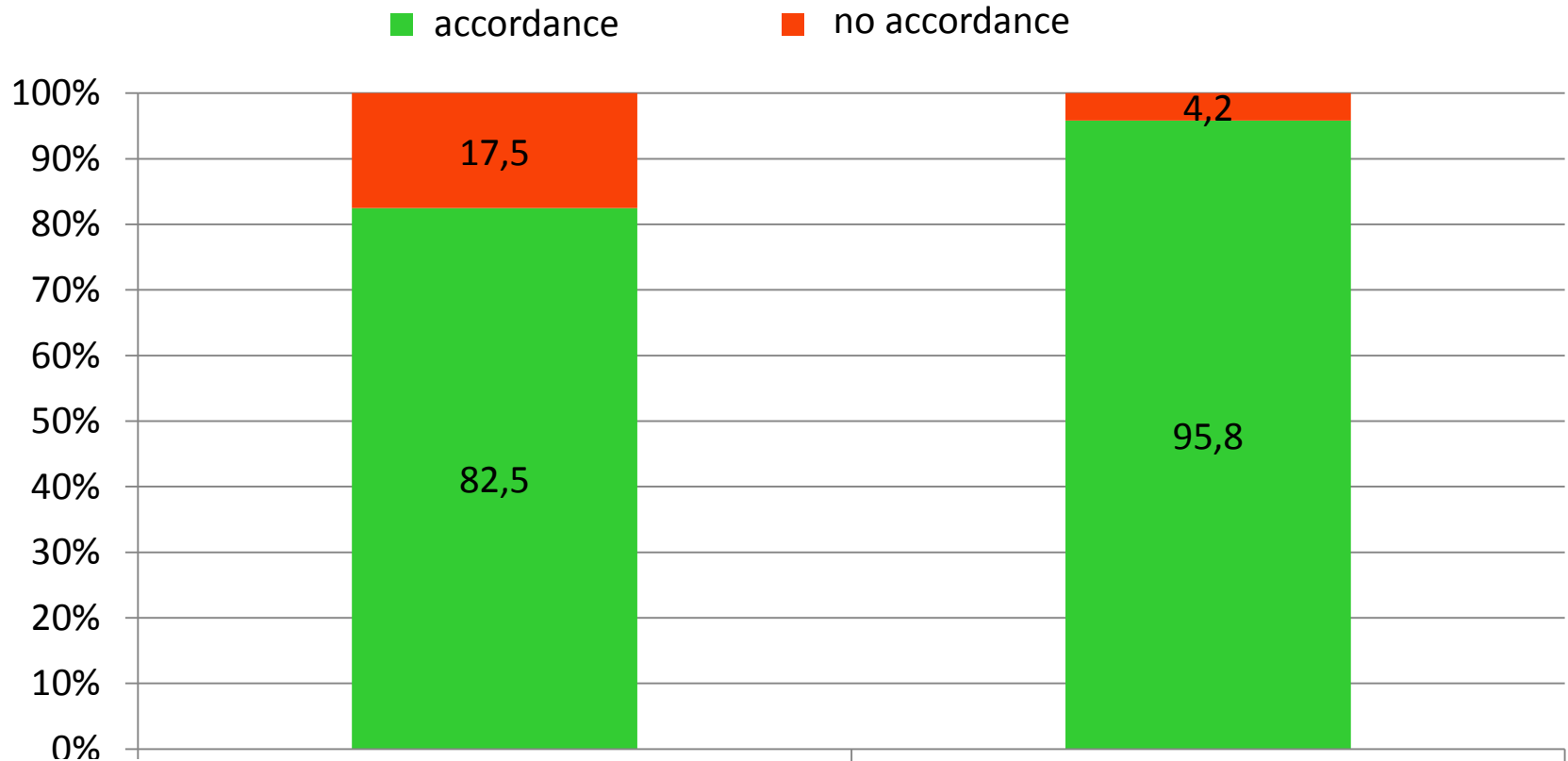
no accordance accordance



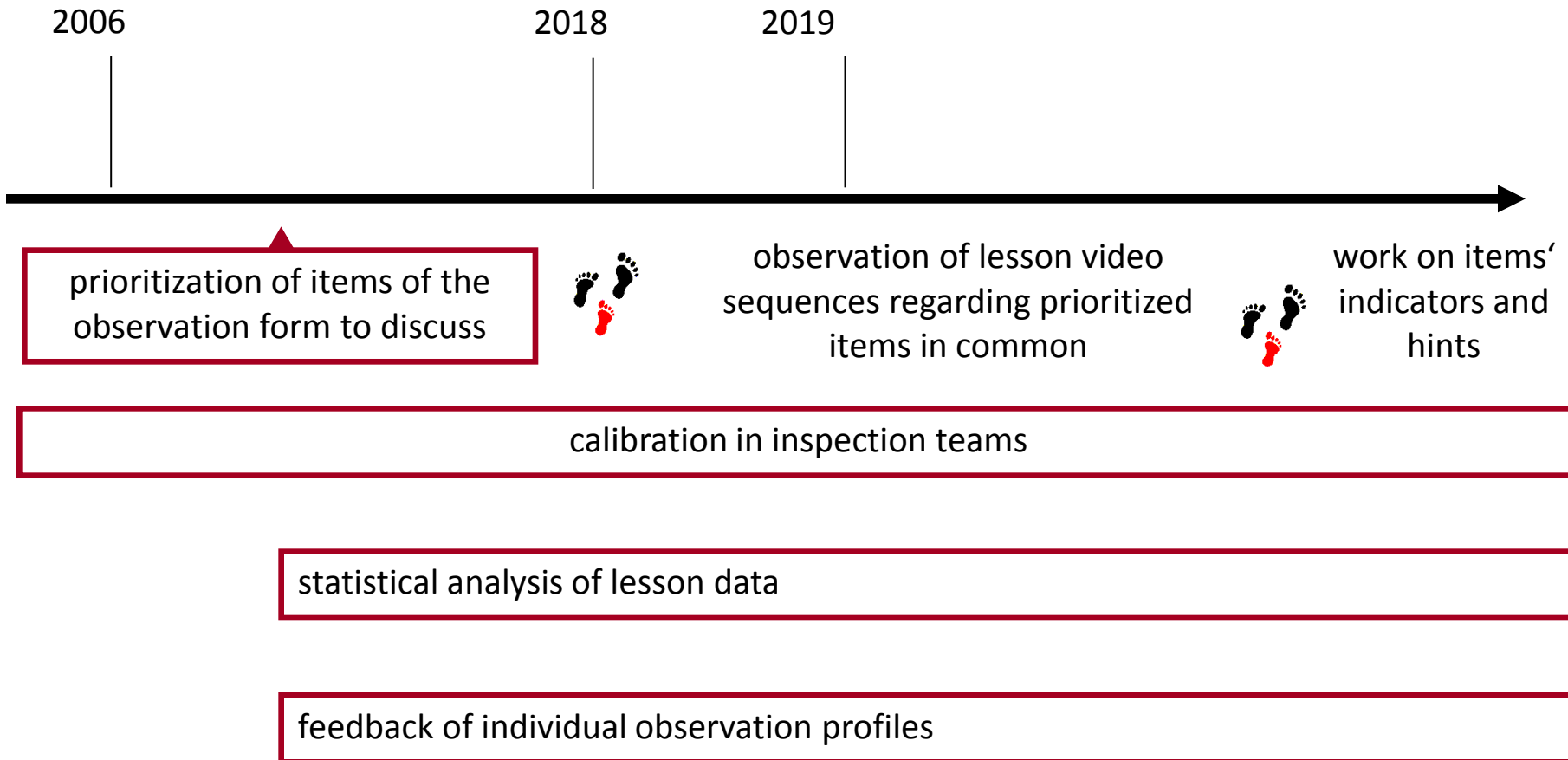
Change in Accordance

M 14 interdisciplinary competences:

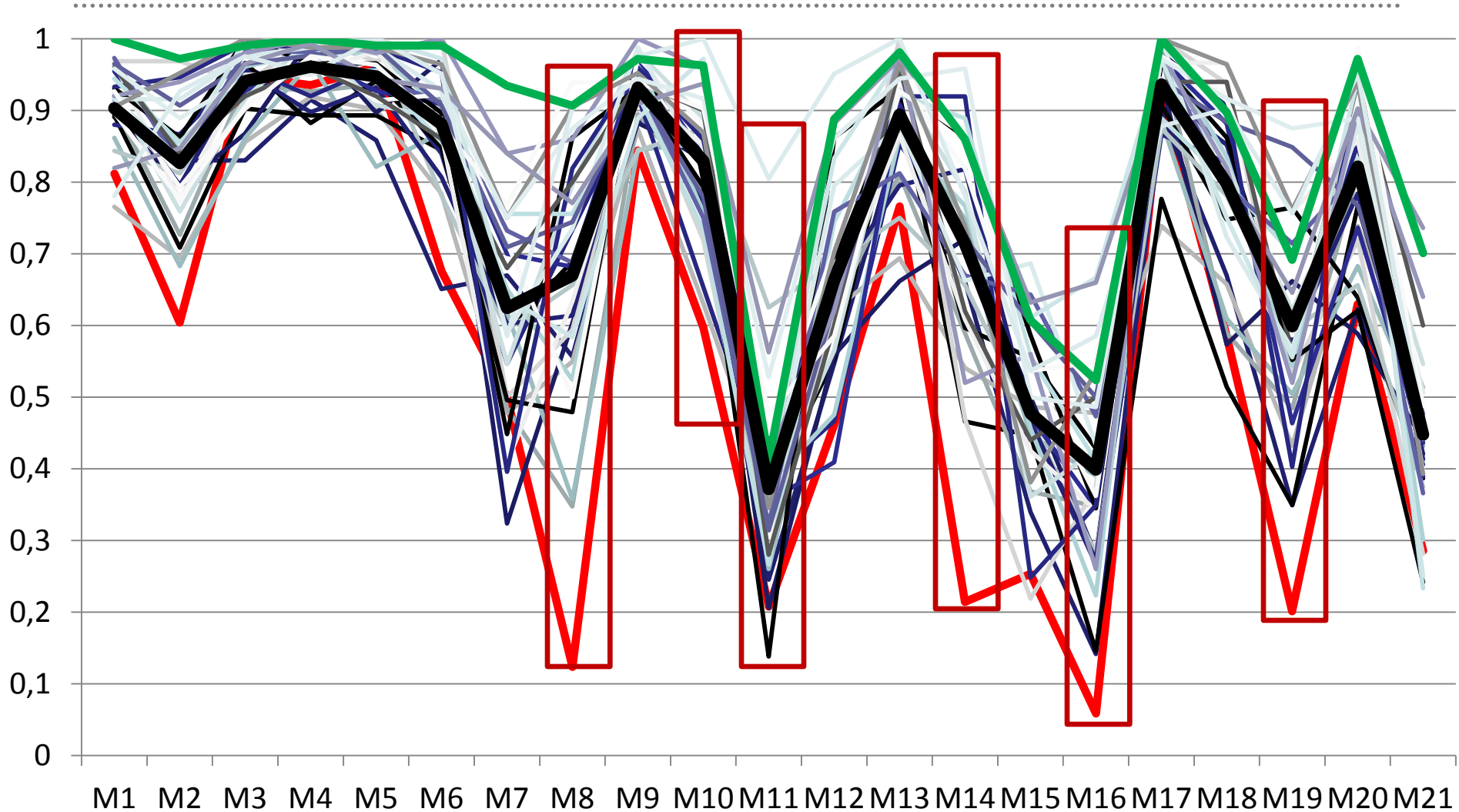
The lesson supports the acquirement of learning and working skills.



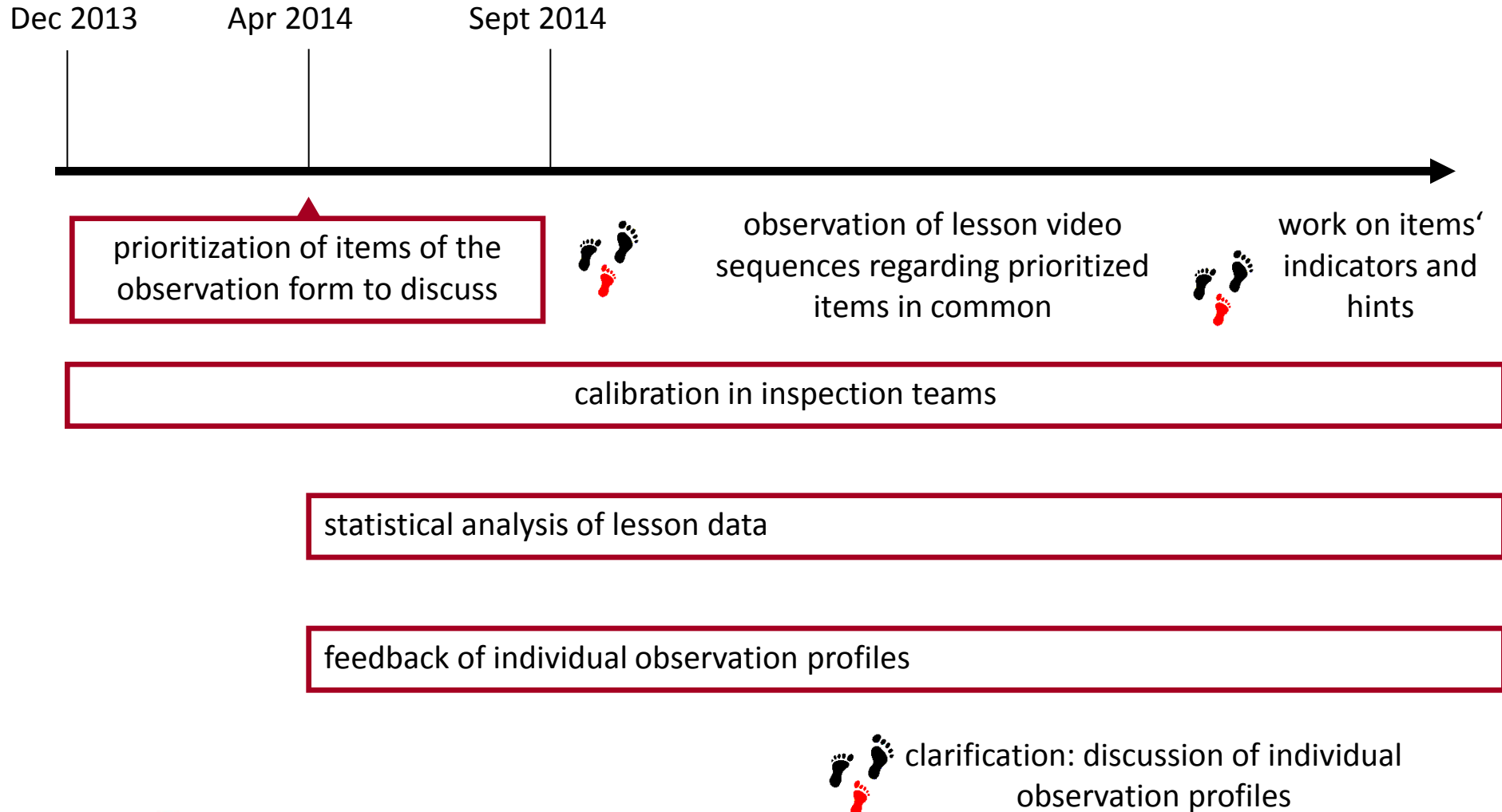
Quality Assurance of Lesson Observation



Individual Observation Profiles in Comparison



Quality Assurance of Lesson Observation



Quality Assurance: feedback

► **Evaluation of each step (online platform),
given by...**

» **Inspectors**

» **Schools' participants:**

- › school management
- › teachers
- › parents

Feedback is analysed by backoffice: essentials (i.e. inspectors' acting, role model, are discussed and adapted

SICI

The Standing International
Conference of **Inspectorates**
Better Inspection, Better Learning



Inspectie van het Onderwijs
Ministerie van Onderwijs, Cultuur en
Wetenschap

NLO
Hildesheim

Thank you!

