

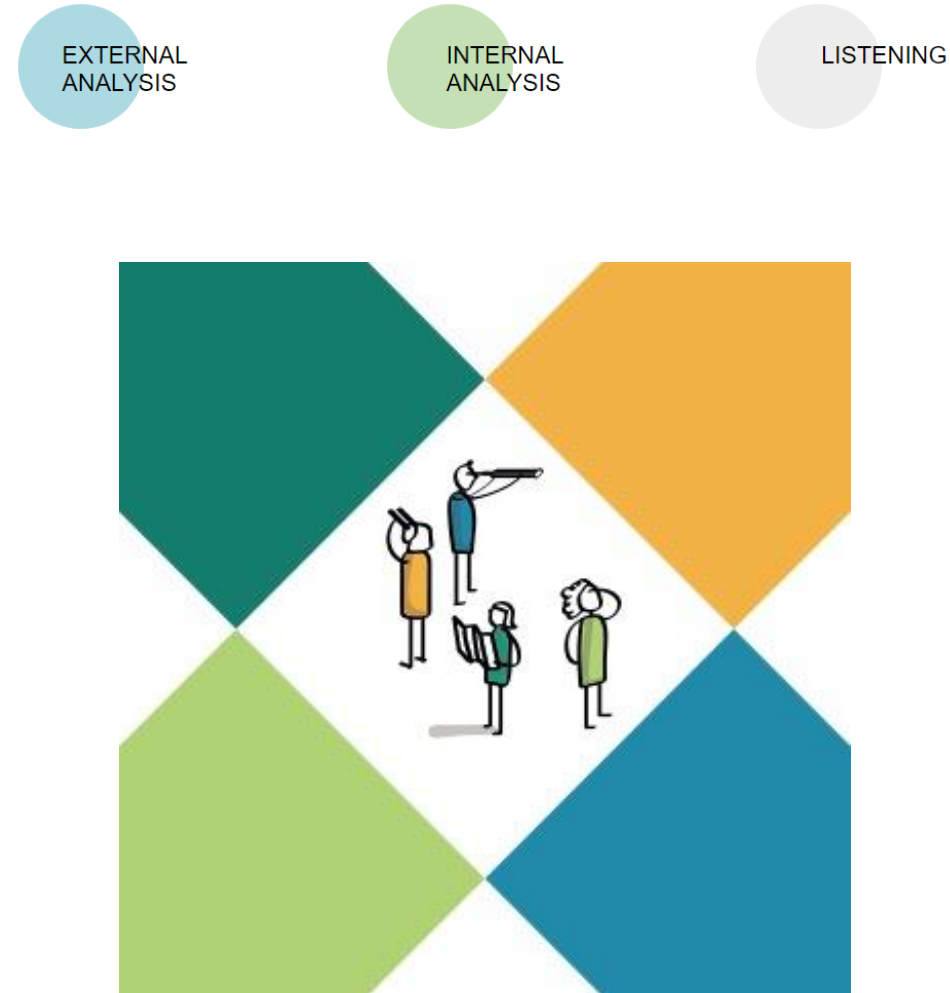


PERSPECTIVES ON RESEARCH

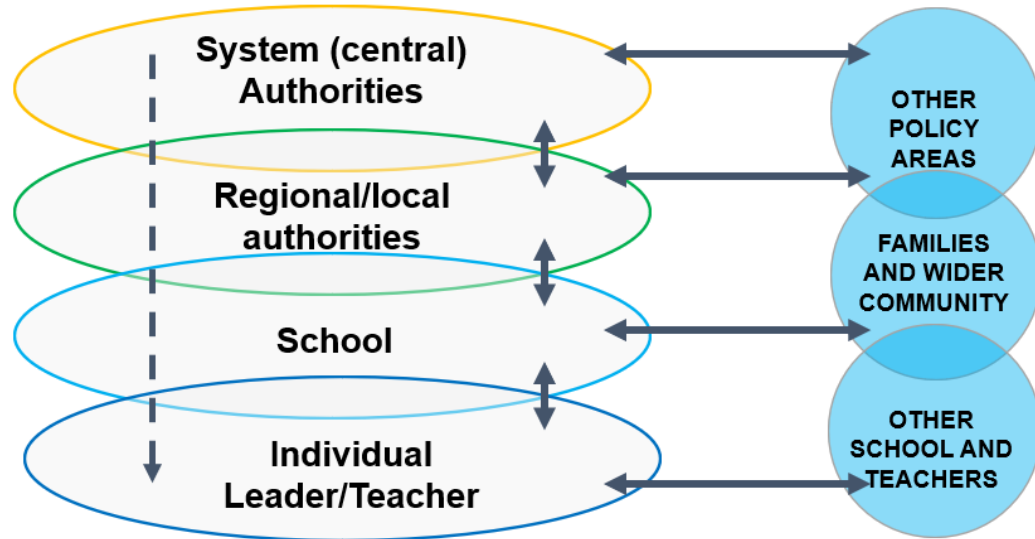
Jacqueline Gallagher
HM Inspector of
Education

Research and Insight (1)

- Co-production approach to evidence gathering for an inspectorate:
 - information from research
 - 'critical friends' in the research community
 - organisational analysis via inspectors
 - school leader/practitioner evaluation
 - input from diverse policymakers across Scottish Government organisations
 - experience and insights of young people and families



Research and Insight (2)



From European Commission (2018) European ideas for better learning: the governance of school education systems

- We have tried to adopt a 'wide-angle lens' recognising the vertical/horizontal layers within our education system and exploring the inter-dependencies, influences and dynamics at play within it.

What research knowledge are we seeking to use ?

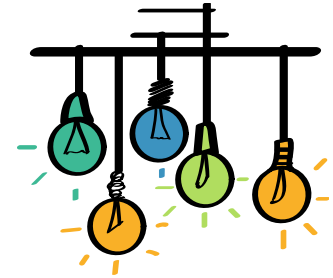
- Engaging with research

‘Phase 1’ rapid evidence reviews:

- participatory research methodologies and children’s voice/agency in decision-making
- use of quality frameworks in Early Learning and Childcare
- perceptions of inspection
- inspection methodologies (international perspectives)

- Engaging in research

- Use of data, research and evidence
- Recruitment of researchers



Current Context

In 2020, Scottish Ministers commissioned a review of Curriculum for Excellence (CfE) to be undertaken by the Organisation for Economic Co-operation and Development (OECD). The OECD reported in June 2021.

The OECD report led to an independent advisor, Ken Muir, being appointed to provide advice on Education Reform and the implementation of OECD recommendations. This led to a further report on 9 March 2022.

Following consideration of recommendations made by Professor Muir, the Cabinet Secretary for Education and Skills announced that a new independent inspectorate body will be established.

In future

- What can we learn from other bodies and the ways they use research?
- How could we make best use of research?